

MONTHLY MEMBERSHIP PROGRESS REPORT

LOCATION ARKANSAS

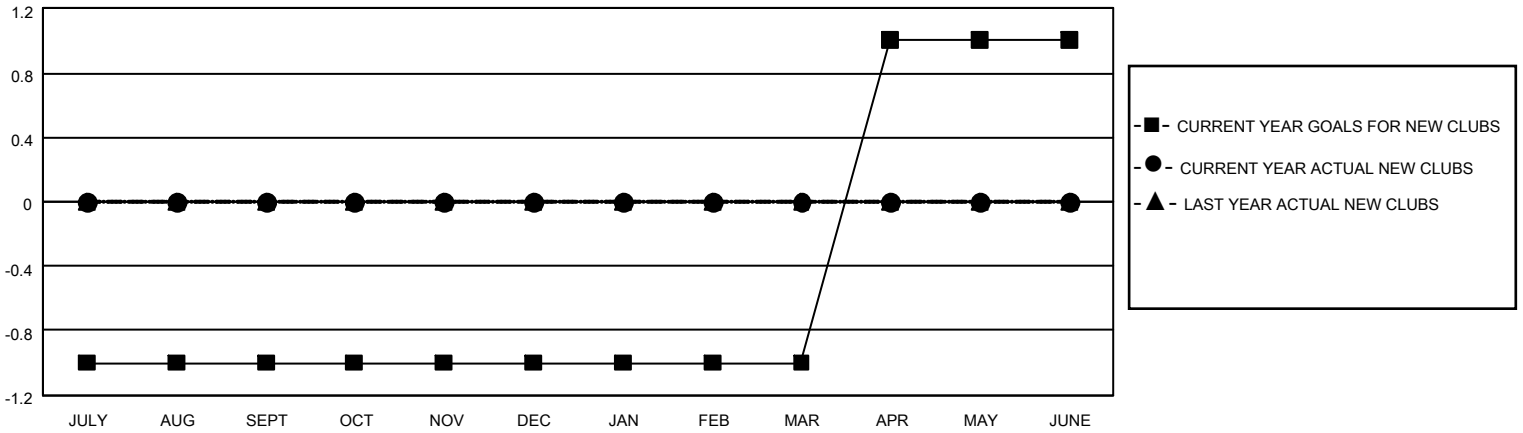
District 7 N

Results as of: 6/30/2021

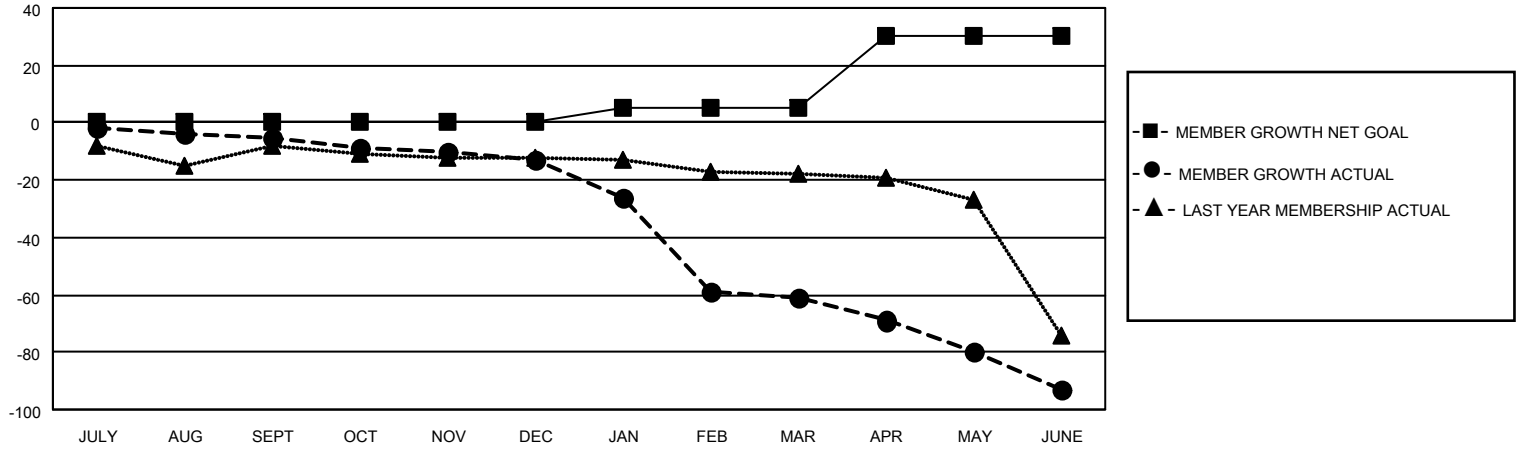
| Clubs | | | |
|-----------------------|---------------|-----------|---------------|
| RESULTS FOR 2020-2021 | | | |
| QUARTER | NEW CLUB GOAL | NEW CLUBS | DROPPED CLUBS |
| JULY/AUG/SEPT | (1) | 0 | 0 |
| OCT/NOV/DEC | 0 | 0 | 0 |
| JAN/FEB/MAR | 0 | 0 | 2 |
| APR/MAY/JUNE | 2 | 0 | 0 |

| Members | | | |
|-----------------------|------------------------|----------------------|---|
| RESULTS FOR 2020-2021 | | | |
| QUARTER | MEMBER GROWTH NET GOAL | MEMBER GROWTH ACTUAL | DROPPED MEMBERS ACTUAL (including transfers) |
| JULY/AUG/SEPT | 0 | 15 | 15 |
| OCT/NOV/DEC | 0 | 4 | 11 |
| JAN/FEB/MAR | 5 | 13 | 54 |
| APR/MAY/JUNE | 25 | 35 | 44 |

GOALS AND ACTUAL NEW CLUBS CUMULATIVE



GOALS AND ACTUAL MEMBERS CUMULATIVE



DROPPED CLUBS: 2

14 CLUBS OF 28 ADDED 1 OR MORE NEW MEMBERS

| <u>GENDER DISTRIBUTION</u> | |
|----------------------------|--------------|
| MALE | 317 (60.04%) |
| FEMALE | 211 (39.96%) |

| <u>DROPPED MEMBERS</u> | |
|------------------------|------------|
| DECEASED | 9 |
| CLUB CANCELLED | 31 |
| OTHER | 84 |
| TOTAL | 124 |

[CLICK HERE FOR CUMULATIVE MEMBERSHIP DATA](#)

| | |
|---------------------------------|-----|
| TOTAL FAMILY UNIT MEMBERS | 127 |
| FAMILY MEMBERS PAYING HALF DUES | 64 |